

Simply Silky-Smooth



The MP2014 represents the perfect marriage of a high-quality rotary control-surface, with state-of-the-art digital signal processing and dual 16-channel USB sound cards. An essential assortment of analog and digital I/O supports mixing vinyl, CDs and USB streaming audio in any combination. Simple, elegant and easy to master.

MP2014

ROTARY MIXER



Features

Different music genres require different filter and EQ configurations to properly deal with song content. The MP2014 allows DJs to adjust Filters, EQs and the Isolator to personalize the music. Channel and Isolator Filters can be stacked for truly amazing isolation and manipulation of musical elements.

Each PH/CD input can be switched to Phono level or CD deck level. An AUX input on each mixer channel is also available.

Two USB ports can connect two computers, each supporting 3 stereo playback and 7 stereo record channels. Play tracks to each input channel and the USB Aux. Simultaneously record each Deck pre-fader, post-fader, the Session In, the Mic, and the Main mix.

The Isolator EQ on the Main mix has powerful 3-band +10 dB to full-cut 24 dB per octave filters with fully adjustable crossover points.

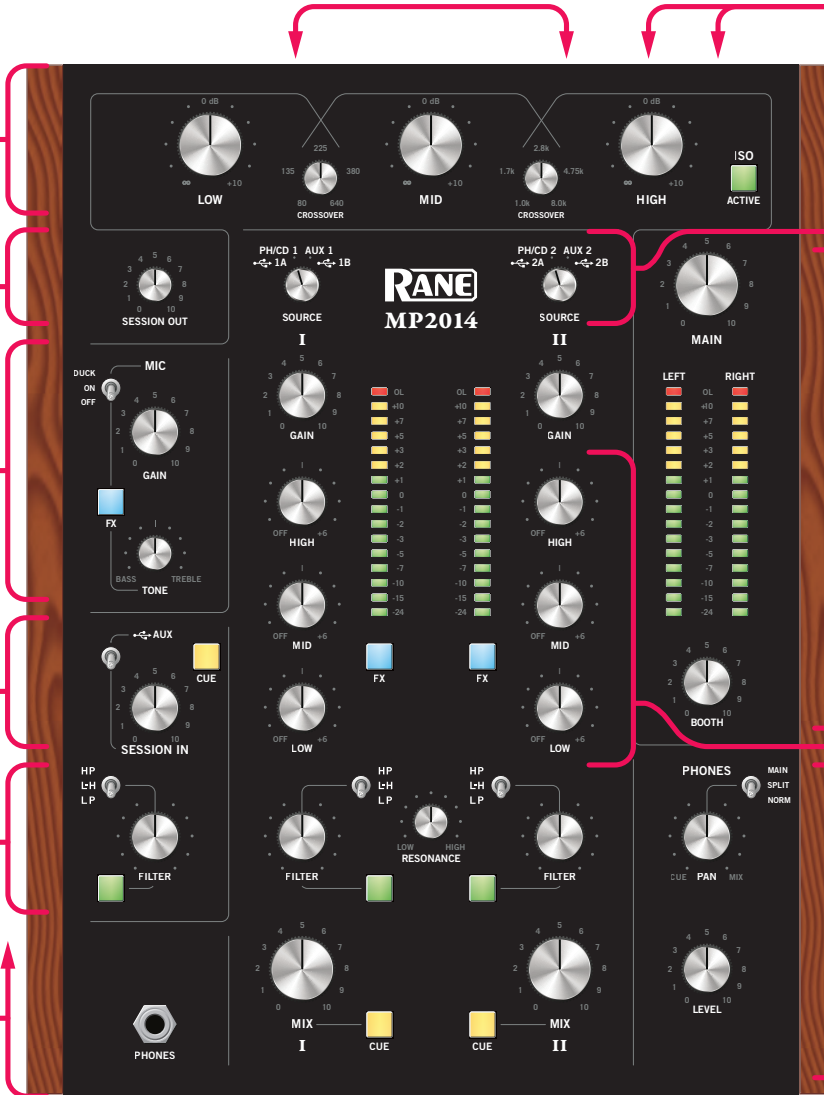
The Session Output goes to S/PDIF and RCA outputs for recording or chaining mixers together.

The Mic input can switch to mic-level or wireless-mic line-level. The DUCK switch temporarily lowers the mix by 10 dB while turning the mic on.

The Session In source may be RCA, S/PDIF or USB AUX playback channels 9-10.

A sweepable Low-pass, Low/High-pass, or High-pass 24 dB per octave filter can activate on each input channel, along with a central Resonance control.

Real wood side panels make this mixer an instrument of beauty.



Each input channel selects USB-A, USB-B, a PH/CD deck, or a stereo line AUX.

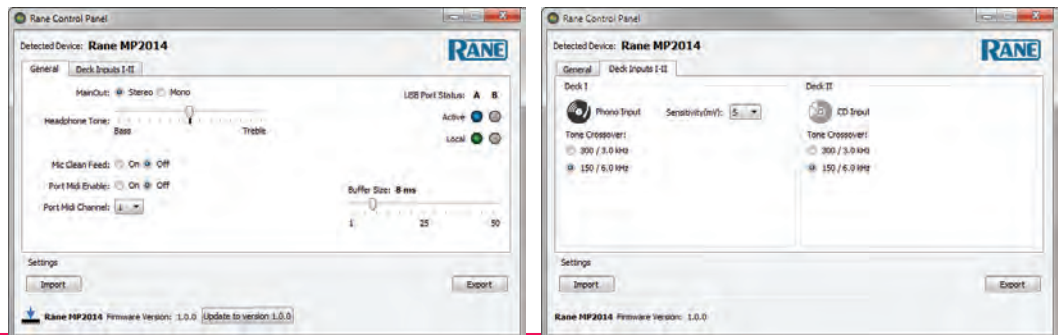
- Deck 1 USB playback channels 1-2.
- Deck 2 USB playback channels 3-4.

The Main Mix has a 16-segment stereo Meter, XLR Main Outputs with a Level control and TRS Booth Outputs with a Level control.

3-band +6 dB to full-cut 12 dB per octave tone filters on each input channel (with selectable 300 / 3k or 150 / 6k Hz crossover points in the user control panel*).

Cue any input channels or the Session Input with the CUE switches and the Headphone monitor. Pan adjusts the Cue/Main Mono Split or Stereo Cueing. 1/4" jacks are on both top plate and front panel with an additional 3.5 mm jack on the front.

*The user control panel supports MP2014 options and status with a USB 2.0 computer connection. Class compliant MIDI and Audio means no driver is required for Mac OSX. A high performance universal ASIO driver is included to run most DJ and DAW software in Windows.



The bottom line: this mixer sounds fantastic with vinyl, CDs and music files. The dynamic range is 116 dB from line in to digital/USB out or digital/USB in to line out. THD+N is only 0.001%. All audio processing is 32-bit floating point with supported sample rates of 44.1 kHz, 48 kHz or 96 kHz.

Description

Successful artists demand purity—purity of sound most importantly, but also purity of style, controls, movement and art. Rane’s answer to this demand is the MP2014 two-channel rotary mixer with a pristine signal path that provides everything needed with nothing else added.

Different DJ styles require different instruments. The MP2014 is uniquely tailored for the artist seeking the fluidity and smooth transitions provided by silky-smooth rotary controls. Like its four-channel big brother this definitive mixing instrument is realized through a combination of powerful and unique features, classic elegance, rugged design and intuitive simplicity.

Featuring exceptional phono preamps, three-way swept-filters and a three-band, steep 24dB/octave main mix Isolator—with adjustable crossover points—the MP2014 provides the same quality, aesthetics and high-resolution audio as the MP2015 in an elegant and portable design.

Rane’s Secret Sauce

The two-channel MP2014 uses the same platform as Rane’s MP2015, which is the new worldwide standard for four-channel rotary mixers. This means it is a no-compromise music-mixing machine.

With a world standard to work with, creation of the MP2014 was straightforward: remove two input channels and the Sub-mix channel; leave everything else alone and voilà, you have a MP2014—okay, not quite that simple, but in the critical pristine signal path, it is.

Designed for high-end, hi-res audio systems—whether club or studio, personal or downtown. Control, sound, reliability, durability and portability differentiate the MP2014 from all other rotary mixers.

There are no compromises in the design. It has the best sound, the best features, the best feel, and the best reliability, durability and portability, and is supported by the best customer service on the planet.

Hi-Res Sources

A world-class leader in performance, the MP2014 is designed for playback of High-Resolution Audio (HRA) 24-bit studio master quality sources. Its sonic signature has no equal, satisfying the most stringent vinyl purists. And the dynamics are perfect for DJs preferring the uncompressed sound of WAV and FLAC files.

Ergonomics

Strikingly different and beautiful to look at with its laser-etched Rane-logo wood side panels, classic spun-aluminum knob caps, 16-segment level peak-hold meters and back-lit push switches, the MP2014 sports a new compact size and shape for a rotary mixer, with all controls selected, designed and located for effortless professional performance playback. Its size makes it portable and easy to move about.

Sound Quality

Professional high-end sound quality begins and ends with the audio signal converters. The MP2014 uses AKM Premium Audio Device™ delta-sigma modulator converters that meet the highest sound quality standards of recording studios. The balanced differential audio input converters deliver 116 dB dynamic range, utilizing a built-in modified FIR architecture that minimizes group delay, allowing excellent linear phase response. The 24-bit audio output converters have the same 116 dB dynamic range and sport AKM’s proprietary 24-bit digital filter for better sound quality achieving low distortion characteristics and wide dynamic range. The differential outputs eliminate the need for AC coupling capacitors further increasing performance. Input and output converters support sample rates of 44.1 kHz, 48 kHz, or 96 kHz. Overall Digital/USB in to Line-out, or Line-in to Digital/USB out dynamic range is 116 dB (A-weighted), while Line-input to Line-output dynamic range is a remarkable 113 dB (A-weighted) with vanishingly low THD+N of 0.001%.



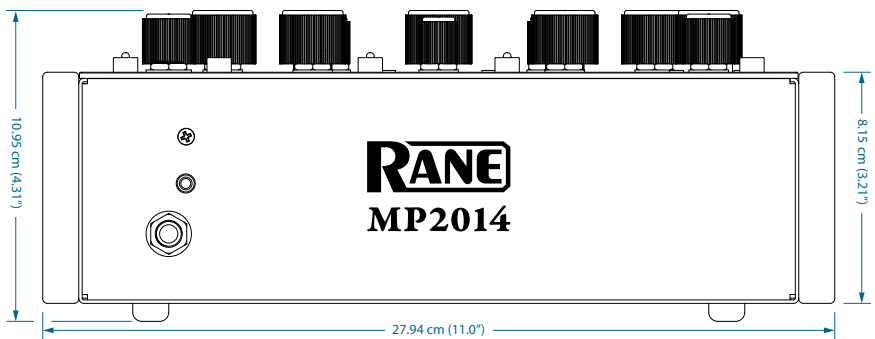
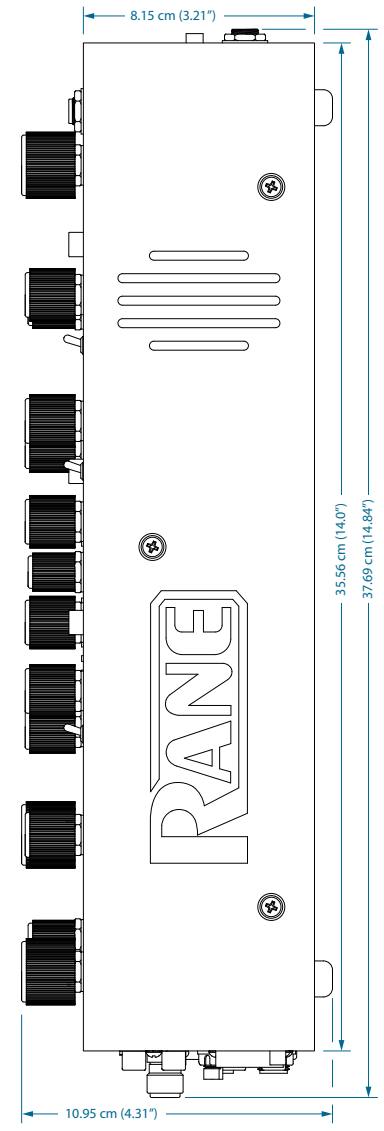
MP2014

ROTARY MIXER



All specifications typical unless otherwise stated

Two Analog Deck Inputs	Each is Phono-CD switchable
....Analog Stereo RCA jacks	Phono (RIAA) or CD (line-level)
.....Phono Response	RIAA +0.1/-0.2 dB, Gain: 31 dB at 1 kHz
.....Butterworth 3rd-order Infrasonic (rumble) and 2nd-order Low-pass Filters	
.....Max Phono Input	126 mV
.....Max Line Input	4 Vrms, all unbalanced inputs
Two Analog Aux Inputs: Line Level	Stereo unbalanced RCA jacks
Session Analog Input: Line Level	Stereo unbalanced RCA jacks
Session S/PDIF Input / Output	RCA jacks (Dynamic range of 128 dB)
....Input 16-bit or 24-bit PCM only	Sample Rate 16 kHz to 144 kHz
....Dynamic range of 128 dB with ultra-low jitter and 16:1 SRC conversion range	
Analog to Digital Converters	24-bit @ 44.1, 48, or 96 kHz
Digital to Analog Converters	24-bit @ 44.1, 48, or 96 kHz
Digital Signal Processing	32-bit floating point
....Dynamic Range	
.....Digital/USB Input to Line Output	116 dB A-weighted
.....Line Input to Digital/USB Output	116 dB A-weighted
.....Line Input to Line Output	113 dB A-weighted
....THD and Noise	0.001%
USB 2.0 Audio (2 Independent Ports)	Seven stereo record, three stereo playback
....PCM	24-bit @ 44.1, 48, or 96 kHz
....Class Compliant	No driver needed for Mac OS X
....Universal ASIO driver included for Windows 7-SP1, Windows 8.1, Windows 10	
FlexFX Send / Return	Stereo unbalanced RCA jacks
Mic Input	Balanced ¼" TRS & XLR combo jack
....Mic / Line-level switch	Choose Line to connect a wireless receiver
Line Outputs	Main, Booth, Session, FX Loop Send
....Frequency Response	20 Hz to 20 kHz ±0.25 dB
....Unbalanced jacks (Session & FX Send)	Max 4 Vrms
....Balanced jacks (Main & Booth)	Max 8 Vrms
Universal Power Supply: 100 to 240 VAC	Max 20 W, 50 Hz to 60 Hz
.....Transient voltage and EMI protection, turn on muting and overload protection	
Unit: Conformity	CE, FCC, cCSAus
Size: 35.56 cm x 27.94 cm x 10.95 cm	14" H x 11" W x 4.31" D (with knobs)
....Weight: 4.7 kg	10.4 lb
Shipping Size: 19.7 cm x 38.1 cm x 49 cm	7.75" H x 15" W x 19.25" D
....Weight: 6.4 kg	14 lb



©Rane Corporation 10802 47th Ave. W., Mukilteo WA 98275-5000 USA TEL 425-355-6000 FAX 425-347-7757 WEB rane.com