



CT100 MULTI AUDIO CABLE TESTER

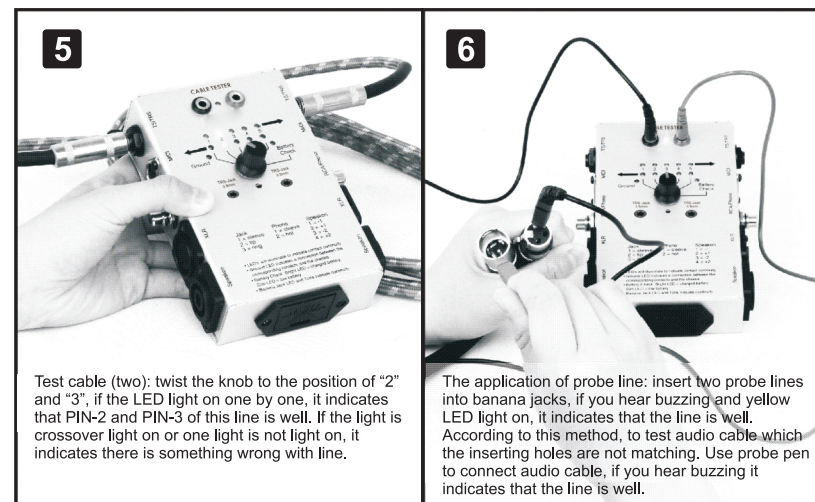
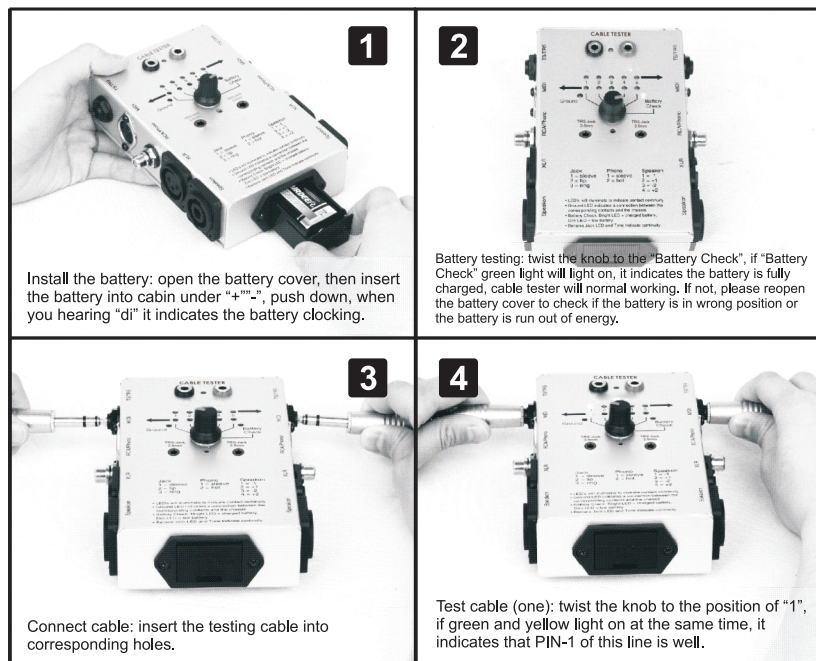
GENERAL DESCRIPTION

CT100 is a kind of multi audio cable tester. Whether you are specialized in stage or recording studio installation, facing to intact stage or equipment but the equipments have no sound or the sound is distortion inexplicable. CT100 helps you to check every cable or jack if they connecting properly (short circuit or poor contact test) to eliminate and solve the problem.

FEATURES

- * Enables quick convenient continuity cable testing for all types of cable;
- * Tests cables with all types of combinations of the following connectors: 1/4" TRS, 1/8" TRS, balanced XLR, Phono/RCA, banana plug, Speakon, and 5-pin MIDI;
- * 6-way switch for selecting connections to be tested, also includes internal battery and ground Connection status checks;
- * LED's confirm each conductor continuity and connection.

USAGE METHODS



TECHNICAL SPECIFICATIONS

- * Length x width x height: 140mm x 90mm x 35mm
- * Net weight: 592g
- * Gross weight: 781g

SERVICE

If your product needs servicing, follow these instructions:

1. Ensure the problem is not related to operation error or external system devices.
2. Keep this owner's manual. We don't need it to repair the unit.
3. Pack the unit in its original packaging including end card and box. This is very important. If you have lost the packaging, please make sure you have packed the unit properly. Extreme is not responsible for any damage that occurs due to non-factory packing.
4. Ship to the Extreme tech support center or the local return authorization.