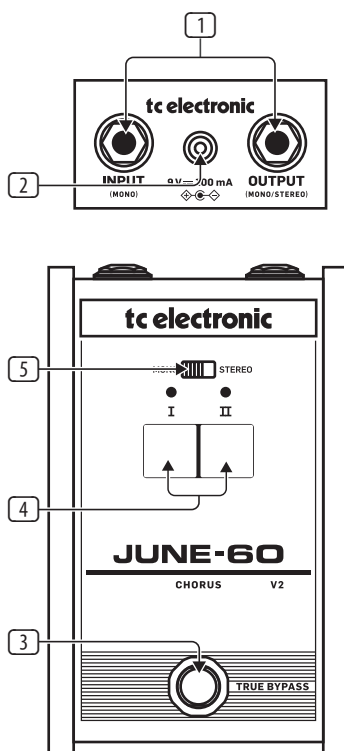


# TC Electronic

## JUNE-60 V2 CHORUS

Authentic Recreation of the Juno-60  
Synthesizer Chorus with 2-Button Interface  
and BBD Circuitry

### Quick Start Guide



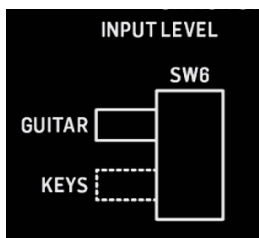
### Controls and Connectors

1 **Input/Output jacks** – Connect a ¼" TS cable from your guitar to the INPUT jack.

**Mono setup:** Set slider to MONO and connect a ¼" TS cable from the OUTPUT jack to your amplifier.

**Stereo setup:** Set slider to STEREO and connect a ¼" TRS split cable from the OUTPUT jack to a pair of amplifiers.

**Note:** Input impedance has two options designed to optimize performance for guitar or keyboard. Access the internal INPUT LEVEL slide switch (SW6) to choose the optimal option for your setup



2 **9 V DC** – Connect a standard 9 V power supply (not included).

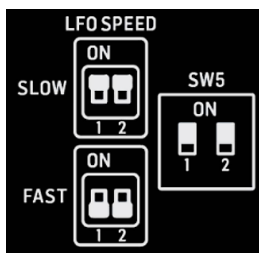
3 **Footswitch** – Turns the effect on and off. The LED will light when the pedal is engaged. The pedal operates in true bypass when disengaged.

4 **Mode** – Press button I or II to select between 2 chorus preset settings. Press buttons I and II simultaneously to activate a 3rd chorus preset setting.

**Note:** Preset I and II LFO speeds can be changed independently via the internal LFO SPEED DIP switch (SW5).

**SLOW** = Original JUNO settings (recommended for keyboards)

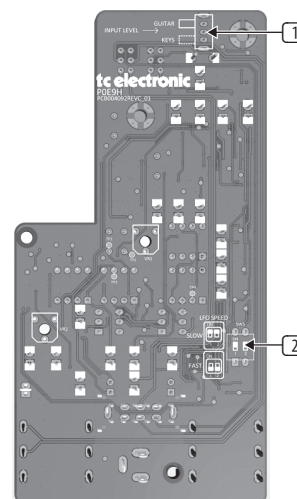
**FAST** = Original JUNE 60 settings (recommended for guitar)



Settings	I	II	III (I+II)
SLOW	0.5 Hz 	0.83 Hz 	10 Hz 
FAST	1.3 Hz 	2.2 Hz 	

5 **Mono/Stereo switch** – Select between MONO and STEREO mode.

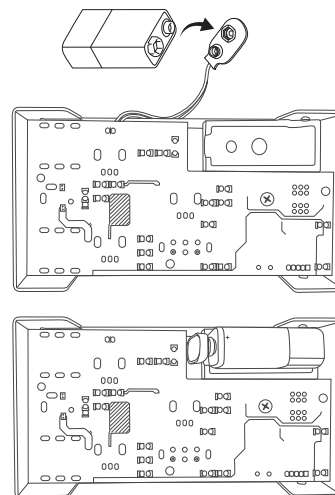
### Internal Option Switches



6 **INPUT LEVEL** – Select between input impedance for GUITAR or KEYBOARD.

1 **LFO SPEED** – Select FAST or SLOW for preset I and/or II.

### Battery Replacement



### Storage



## Specification

### Connectors

<b>Input (mono)</b>	¼" TS, unbalanced
<b>Impedance</b>	500 kΩ (guitar) / 12 kΩ (keyboard)
<b>Output (mono/stereo)</b>	¼" TS or TRS, unbalanced
<b>Impedance</b>	100 Ω
<b>Power input</b>	Standard 9 V DC, center negative, >100 mA
	(not included)
<b>Battery option</b>	Internal 9 V battery connector

### Physical

<b>Dimensions (H x W x D)</b>	56 x 86 x 137 mm (2.2 x 3.4 x 5.4")
<b>Weight</b>	0.5 kg (1.1 lbs)

## FEDERAL COMMUNICATIONS COMMISSION COMPLIANCE INFORMATION

### TC Electronic JUNE-60 V2 CHORUS

Responsible Party Name: **Music Tribe Commercial NV Inc.**  
 Address: **901 Grier Drive  
 Las Vegas, NV 89118  
 USA**  
 Phone Number: **+1 747 237 5033**

### JUNE-60 V2 CHORUS

This equipment has been tested and found to comply with the limits for a Class B digital device, pursuant to part 15 of the FCC Rules. These limits are designed to provide reasonable protection against harmful interference in a residential installation. This equipment generates, uses and can radiate radio frequency energy and, if not installed and used in accordance with the instructions, may cause harmful interference to radio communications. However, there is no guarantee that interference will not occur in a particular installation. If this equipment does cause harmful interference to radio or television reception, which can be determined by turning the equipment off and on, the user is encouraged to try to correct the interference by one or more of the following measures:

- Reorient or relocate the receiving antenna.
- Increase the separation between the equipment and receiver.
- Connect the equipment into an outlet on a circuit different from that to which the receiver is connected.

Consult the dealer or an experienced radio/TV technician for help.

This device complies with Part 15 of the FCC rules. Operation is subject to the following two conditions:

- (1) this device may not cause harmful interference, and
- (2) this device must accept any interference received, including interference that may cause undesired operation.

#### Important information:

Changes or modifications to the equipment not expressly approved by Music Tribe can void the user's authority to use the equipment.

## LEGAL DISCLAIMER

Music Tribe accepts no liability for any loss which may be suffered by any person who relies either wholly or in part upon any description, photograph, or statement contained herein. Technical specifications, appearances and other information are subject to change without notice. All trademarks are the property of their respective owners. Midas, Klark Teknik, Lab Gruppen, Lake, Tannoy, Turbosound, TC Electronic, TC Helicon, Behringer, Bugera, Oberheim, Auratone and Coolaudio are trademarks or registered trademarks of Music Tribe Global Brands Ltd. © Music Tribe Global Brands Ltd. 2021 All rights reserved.

## LIMITED WARRANTY

For the applicable warranty terms and conditions and additional information regarding Music Tribe's Limited Warranty, please see complete details online at [musictribe.com/warranty](https://musictribe.com/warranty).