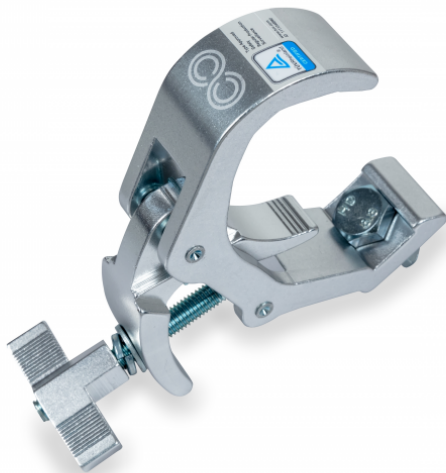
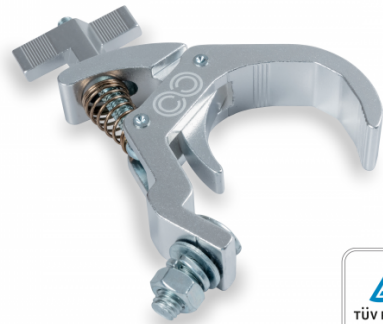


## CLCR- 6080S

ALUMINIUM QUICK RELEASE CLAMP 38 - 60 MM 80 KG

Clamp for trusses with sections between 38 and 60 mm. Quick release Maximum load 80 kg.



## PRODUCT DETAILS

### Key features

### Specifications

Safe working load	80 kg
Fit tube Dimeter	Ø38-60 mm
Material	Aluminum
Surface Treatment	Polishing
Color	Alluminium
Quick Release	Yes
TUV Certified	Yes